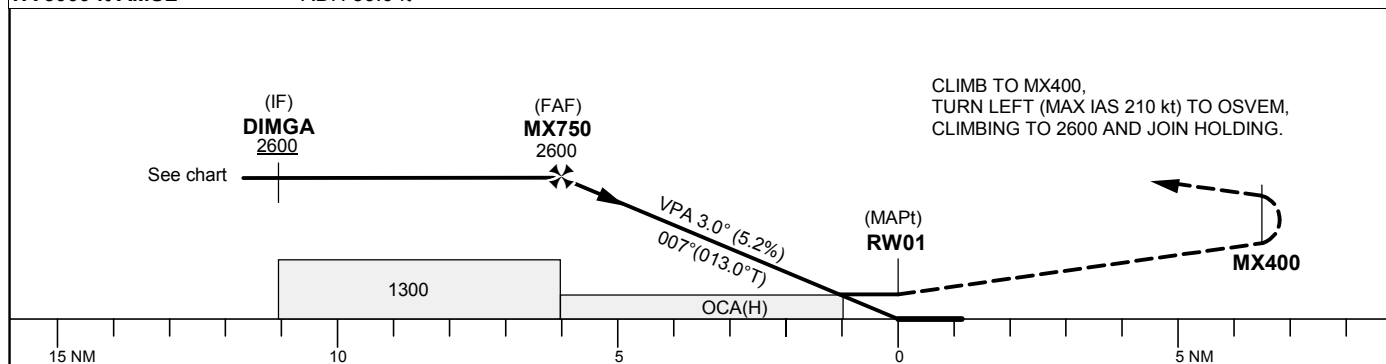
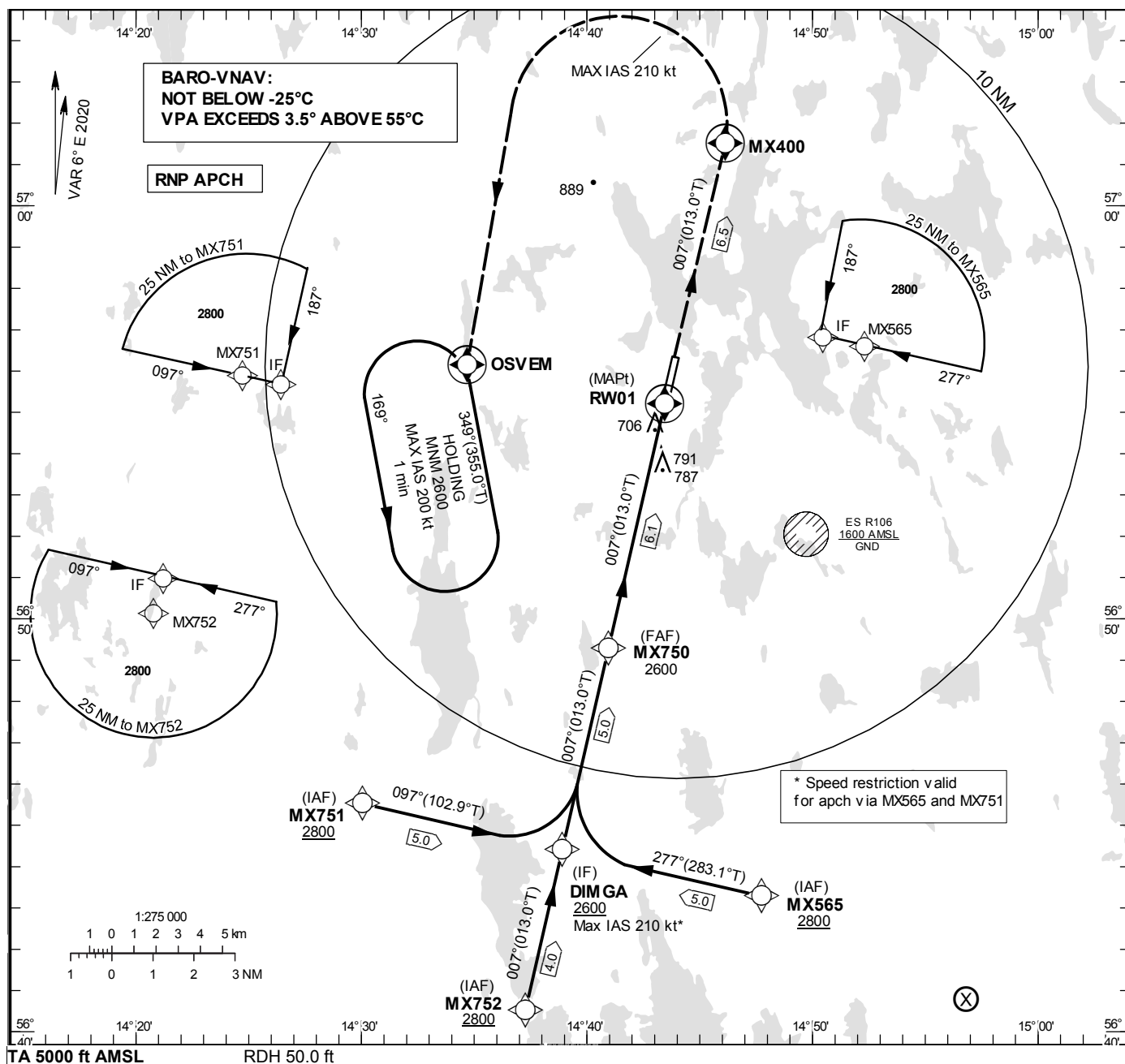


THR ELEV 610 ft, AD ELEV 610 ft
 OCH are related to THR.
 BRG are MAG (True).
 ALT, HGT and ELEV in ft.

KRONBERG TOWER	118.155
----------------	---------

EGNOS Ch 48466 E 01A



OCA (H)					Final approach	Distance FAF-MAPT 6.1 NM									
Cat of ACFT	A	B	C	D	Dist to RW01 (NM)	6		5		4		3		2	
LPV	836 (226)	848 (238)	857 (247)	867 (257)	ALT	2570		2250		1930		1620		1300	
LNAV/VNAV	918 (308)	930 (320)	938 (328)	948 (338)	GS	kt		80	100	120	140	160	180		
LNAV	1040 (430)				Rate of descent	ft/min		425	530	635	745	850	955		
Circling	1090 (480)	1110 (500)	1240 (630)	1290 (680)											

CHANGE: Editorial

VÄXJÖ/Kronoberg

RNP RWY 01 via MX751

Path Desc	Waypoint Identifier	Fly-over	Course °M(°T)	Dist (NM)	Turn Dir	Altitude	Speed	VPA/RDH	Rec Navaid	Navigation Specification
IF	MX751	-	-	-	-	+2800	-	-	-	RNP APCH
TF	DIMGGA	-	097°(102.9°)	5.0	-	+2600	-210	-	-	RNP APCH

RNP RWY 01 via MX752

Path Desc	Waypoint Identifier	Fly-over	Course °M(°T)	Dist (NM)	Turn Dir	Altitude	Speed	VPA/RDH	Rec Navaid	Navigation Specification
IF	MX752	-	-	-	-	+2800	-	-	-	RNP APCH
TF	DIMGGA	-	007°(013.0°)	4.0	-	+2600	-	-	-	RNP APCH

RNP RWY 01 via MX565

Path Desc	Waypoint Identifier	Fly-over	Course °M(°T)	Dist (NM)	Turn Dir	Altitude	Speed	VPA/RDH	Rec Navaid	Navigation Specification
IF	MX565	-	-	-	-	+2800	-	-	-	RNP APCH
TF	DIMGGA	-	277°(283.1°)	5.0	-	+2600	-210	-	-	RNP APCH

Path Desc	Waypoint Identifier	Fly-over	Course °M(°T)	Dist (NM)	Turn Dir	Altitude	Speed	VPA/RDH	Rec Navaid	Navigation Specification
IF	DIMGGA	-	-	-	-	+2600	-	-	-	RNP APCH
TF	MX750	-	007°(013.0°)	5.0	-	@2600	-	-	-	RNP APCH
TF	RW01	Y	007°(013.0°)	6.1	-	@660	-	-3.0/50	-	RNP APCH
TF	MX400	Y	007°(013.0°)	6.5	-	-	-	-	-	RNP APCH
DF	OSVEM	Y	-	-	L	+2600	-210	-	-	RNP APCH

ESMX Holding OSVEM

Path Desc	Waypoint Identifier	Fly-over	Course °M(°T)	Dist (NM)	Turn Dir	Altitude	Speed	VPA/RDH	Rec Navaid	Navigation Specification
HM	OSVEM	Y	349°(355.0°)	-	L	+2600	-200	-	-	RNP 1

FAS Data Block

RNP RWY 01

Input data

Operation Type	0
SBAS Provider	1 (EGNOS)
Airport Identifier	ESMX
Runway	01
Runway Letter	0 (None)
Approach Performance Designator	0
Route Indicator	
Reference Path Data Selector	0
Reference Path Identifier	E01A
LTP/FTP Latitude	565511.7155N
LTP/FTP Longitude	0144326.6935E
LTP/FTP Ellipsoidal Height (metres)	218.8
FPAP Latitude	565618.0505N
Delta FPAP Latitude (seconds)	66.3350
FPAP Longitude	0144354.8175E
Delta FPAP Longitude (seconds)	28.1240
Threshold Crossing Height	50.0
TCH Units Selector	0 (feet)
Glidepath Angle (degrees)	3.00
Course Width (metres)	105.00
Length Offset (metres)	0
HAL (metres)	40.0
VAL (metres)	50.0

Output data

Data Block	10 18 0D 13 05 01 00 00 01 31 30 05 C7 68 6D 18 CB A2 51 06 8C 1C 3E 06 02 B8 DB 00 F4 01 2C 01 64 00 C8 FA 30 D9 CC 52
Calculated CRC Value	30D9CC52

Required Additional Data

ICAO Code	ES
LTP/FTP Orthometric Height (metres)	186.0